



RS03 | STAND-ON COMPACT LOADER AND ATTACHMENTS



RS03: EXCLUSIVE FEATURES

Compact and agile, the RIPPA RS03 Stand-on Skid Steer Loader offers powerful performance in a small footprint. Ideal for tight spaces, it excels in construction, landscaping, and farm work with efficiency and ease.



ENGINE

BRIGGS & STRATTON XR2100 ENGINE, RATED POWER 8.4KW (11.3 HP)

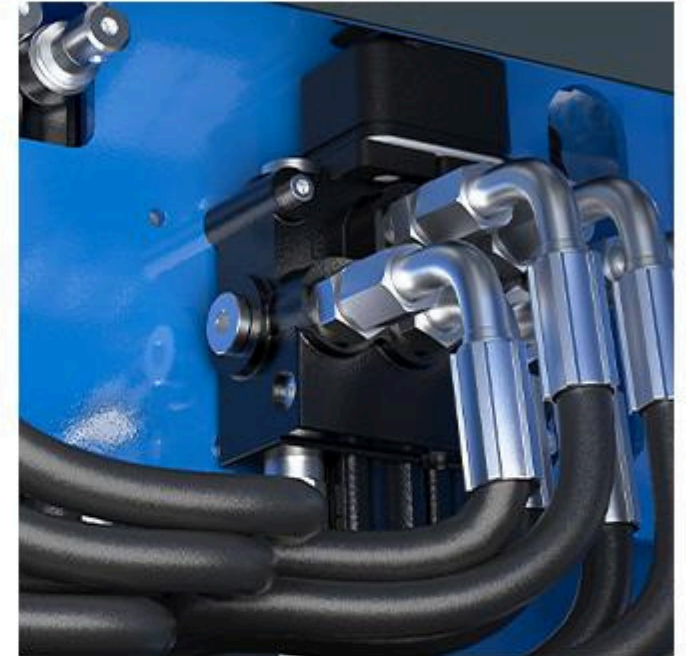
- High-Efficiency power output
- Low fuel consumption
- Low noise & vibration



PUMP

TRIPLE GEAR PUMP

- Provides stable hydraulic flow
- Flow rates of 21.6 + 14.4 + 14.4 L/min
- Smooth operation, excellent compound action



VALVE

MECHANICAL VALVE

- Simple and reliable, easy to operate with low failure rate.
- Durable, withstands harsh working conditions.
- Cost-effective, low maintenance and long service life.
- Smooth and responsive operation, consistent hydraulic performance under varying loads.



RS03 RIPPA

TRACK

INTEGRATED TRACK DESIGN

- Low ground pressure, good ground protection
- Smooth driving with little vibration
- Easily handle slopes and complex working conditions







KEY FEATURES



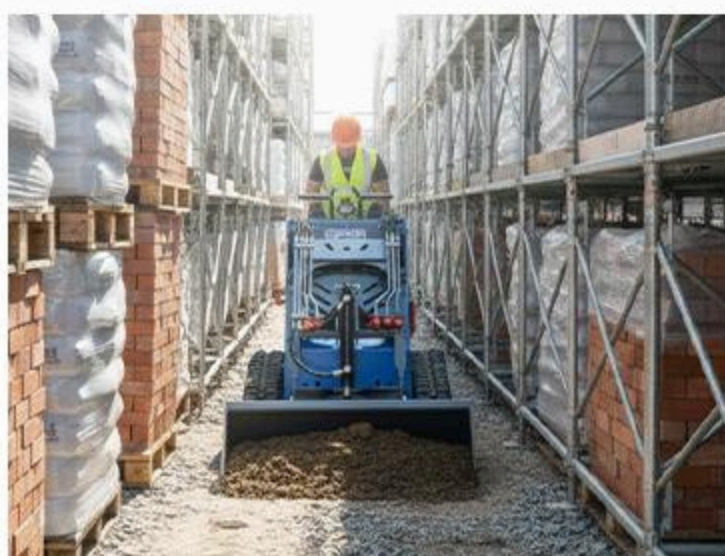
- » Briggs & Stratton XR2100 engine, rated at 8.4 kW (11.3 HP), delivers strong power with low fuel consumption, reliable performance, and easy maintenance.
- » Hydraulic pump directly connected to the engine reduces maintenance.



- » Combining fast loading with efficient operation, with powerful hydraulics and precise control, you can easily move heavy objects, saving time and labor. The maximum unloading height 1553 mm, and the maximum loading capacity 204 kg.



- » 639 kg (1408.7 lb) combined with 50.4 L/min (13.3 gpm) main pump hydraulic flow make for a powerful and high-performance skid steer loader.



- » The 1150mm compact body allows easy maneuvering through tight spaces, making operations in confined areas smooth and efficient.
- » Best-in-class travel speed of 2.5 km/h (1.55 mph).



OPERATOR CONTROLS



KEY FEATURES



- » The control panel features a comfortable and efficient design, equipped with dual-hand levers and independent attachment control levers.

The instrument panel provides real-time monitoring of equipment status.



- » The attachment operating lever provides precise hydraulic control, enabling efficient and flexible operation of various attachments.
- » Provides hydraulic power for various attachments.





KEY FEATURES



- » 2 group of 5 attachment oil circuits enables simultaneous and precise operation of multi-functional attachments.
- » Auxiliary hydraulic flow of 21.6 L/min (5.7 gpm) provides stable power for various attachments.



- » A rear-mounted exposed engine offers better cooling and easier maintenance.
- » The front removable inspection panel allows quick servicing and routine checks.

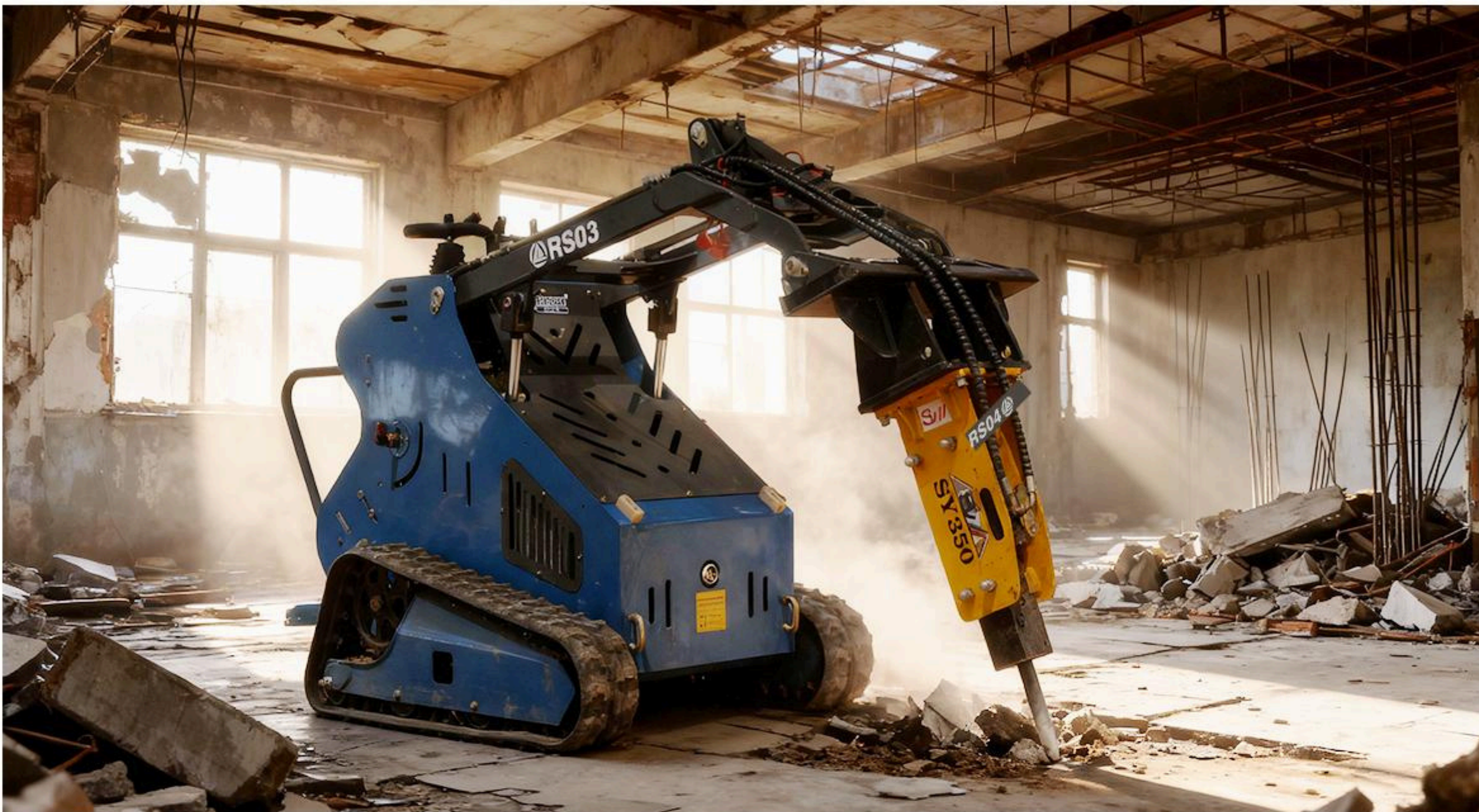


- » High-brightness LEDs provide efficient lighting with low power consumption, reducing energy costs and enhancing safety for nighttime work.



- » The safety guard bar provides effective protection for the operator, preventing accidental contact and ensuring safe operation.

COMFORT & CONVENIENCE



KEY FEATURES



» The lifting holes are sturdy in structure and reasonably located, making it easy to lift and load the whole machine safely.

» The position of the lifting holes has been calculated based on the force to ensure stability.



» A neatly arranged metal oil pipe runs above the robotic arm, ensuring durability and resistance to damage.

» Connecting to an inverted cylinder reduces dust intrusion and improves durability.

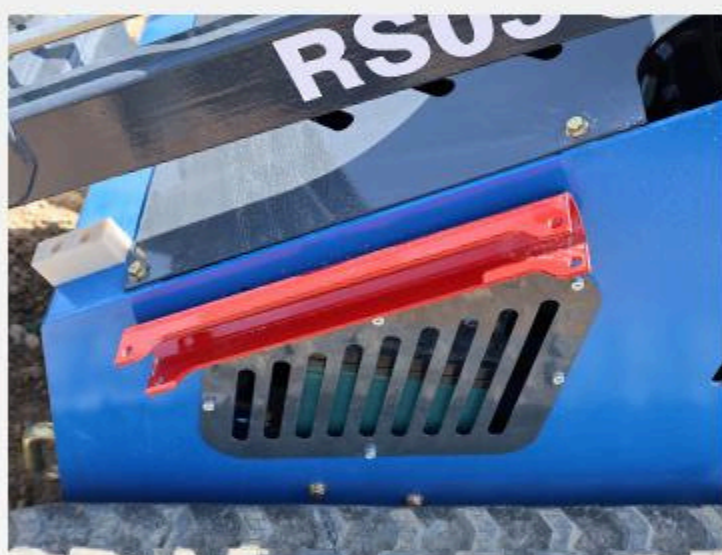




KEY FEATURES



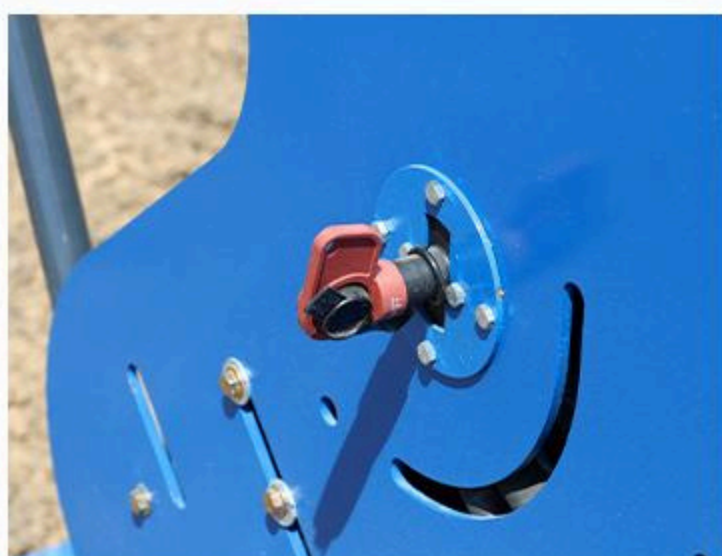
- » The quick-change device can quickly and safely switch between various attachments
- » Regular inspection, lubrication and rust prevention maintenance can significantly extend its service life.



- » The maintenance support rod extends to the boom cylinder area, enabling easier inspection and servicing.
- » The simple and sturdy structure ensures safe and reliable support during maintenance.



- » The footrest can be flipped up and is equipped with a pin for connecting and hinged parts. It can be fixed and rotated flexibly, which is convenient for disassembly, assembly and maintenance.



- » The power switch safely turns on or off all electrical circuits to prevent misuse. Turning it off during long periods of inactivity prevents battery drain and extends battery life.



PERFORMANCE MATCHED

When replacing auxiliary equipment such as trencher, stump grinder, log grapple, the process ensures you that the hydraulic requirements, weight, and width of your attachment matches your power unit's exact specifications.

Visit rippa.com



DIRECT DIGGING

- Digging depth: 800 mm
- Bucket capacity: 0.15 m³
- Number of hydraulic lines: 1
- Length: 1.8 m, Width: 0.8 m, Height: 0.58 m
- Weight: 110 kg



GRAPPLE BUCKET

- Grab capacity: 0.25 m³
- Opening width: 1150 mm
- Length: 1.25 m, Width: 0.85 m, Height: 0.8 m
- Weight: 140 kg



ENCLOSED SWEEPER

- Sweeping width: 1200 mm
- Brush material: Nylon and steel wire
- Brush speed: 200 rpm
- Hydraulic motor model: 2K-100
- Collection box capacity: 0.2 m³
- Length: 1.5 m, Width: 1.4 m, Height: 0.6 m
- Weight: 170 kg



MOWER

- Cutting width: 1200 mm
- Blade type: Straight blade
- Number of blades: 3
- Protective panel configuration
- Cutting height adjustment: 500 mm
- Length: 1.3 m, Width: 1.35 m, Height: 0.7 m, Weight: 184 kg



BRUSH CUTTER

- Cutting diameter: 1100 mm
- Blade material: Manganese steel
- Required hydraulic flow: 30 L/min
- Suitable vegetation: Shrubs with a diameter less than 30 mm
- Length: 1.6 m, Width: 1.2 m, Height: 0.5 m, Weight: 165 kg



DOZER BLADE

- Blade width: 1150 mm
- Blade height: 600 mm
- Maximum dozing angle: 30°
- Hydraulic tilt function
- Material: Q235
- Length: 1.25 m, Width: 0.7 m, Height: 0.7 m, Weight: 130 kg



4 IN 1 BUCKET

- Bucket capacity: 0.25 m³
- Maximum opening width: 1100 mm
- Operation mode: Hydraulic
- Number of hydraulic cylinders: 2
- Material: Q235
- Length: 1.15 m, Width: 0.75 m, Height: 0.55 m, Weight: 140 kg



LIFTING DEVICE

- Rated lifting capacity: 300 kg
- Maximum lifting height: 3 m
- Boom length: 2000 mm
- Hydraulic rotation function
- Safety valve setting pressure: 160 bar
- Length: 0.65 m, Width: 1.2 m, Height: 0.3 m, Weight: 53 kg



TRACTION DEVICE

- Connection type: Ball head connection
- Length: 0.7 m, Width: 0.4 m, Height: 0.35 m
- Weight: 32 kg





MIXING BARREL

- Capacity: 0.25 L
- Material: Q235
- Discharge method: Mechanical
- Required hydraulic flow: 30 L/min
- Length: 0.7 m, Width: 0.9 m, Height: 0.7 m, Weight: 116 kg



RIPPER

- Teeth quantity: 2
- Replaceable tooth tips
- Maximum loosening depth: 200 mm
- Length: 0.67 m, Width: 0.5 m, Height: 0.6 m
- Weight: 43 kg



SWEEPER

- Sweeping width: 1200 mm
- Brush material: Nylon and steel wire
- Brush rotation speed: 200 rpm
- Hydraulic motor model: 2K-100
- Length: 1.55 m, Width: 1.15 m, Height: 0.8 m, Weight: 130 kg



FORK

- Rated load: 500 kg
- Overflow protection device
- Fork width adjustment method: Manual
- Adjustable fork distance: 800 mm
- Length: 1.2 m, Width: 0.72 m, Height: 0.7 m, Weight: 92 kg



SIDE-SHIFT PALLET FORK

- Rated load: 500 kg
- Side shift range: 50 mm
- Adjustment method: Hydraulic
- Length: 1.25 m, Width: 0.72 m, Height: 0.4 m
- Weight: 110 kg



LOG GRAPPLE

- Grab capacity: 0.25 m³
- Opening width: 1150 mm
- Length: 1.1 m, Width: 0.85 m, Height: 0.7 m
- Weight: 150 kg



ROTARY DRILL

- 800 mm length, 150 mm diameter
- Length: 1.3 m, Width: 0.62 m, Height: 0.35 m
- Weight: 110 kg

- 800 mm length, 200 mm diameter
- Length: 1.3 m, Width: 0.62 m, Height: 0.35 m
- Weight: 112 kg

- 800 mm length, 220 mm diameter
- Length: 1.3 m, Width: 0.62 m, Height: 0.35 m
- Weight: 112 kg

- 800 mm length, 250 mm diameter
- Length: 1.3 m, Width: 0.62 m, Height: 0.35 m
- Weight: 114 kg



WOOD CHIPPER

- Length: 0.95 m, Width: 0.70 m, Height: 1.35 m
- Weight: 96 kg



ROCK BUCKET

- Length: 1.0 m, Width: 0.5 m, Height: 0.6 m
- Weight: 99 kg



LAND LEVELER

- Length: 1.38 m, Width: 1.3 m, Height: 0.45 m
- Weight: 42 kg

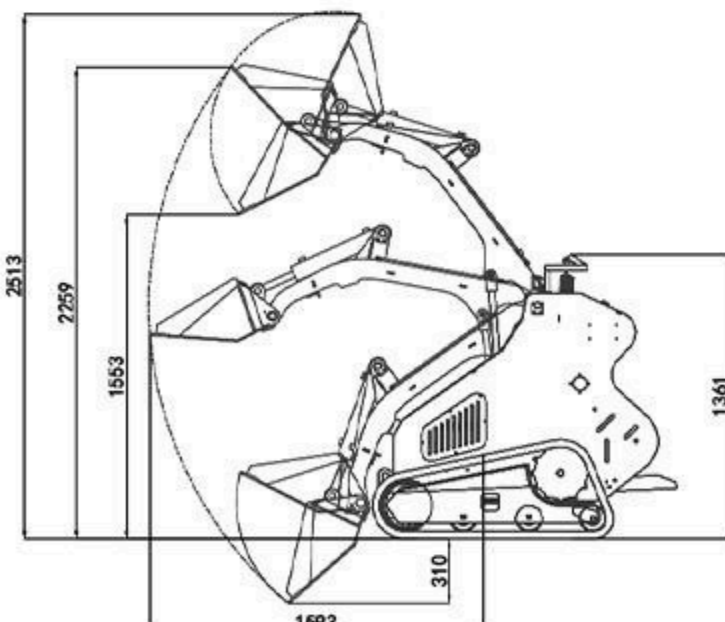
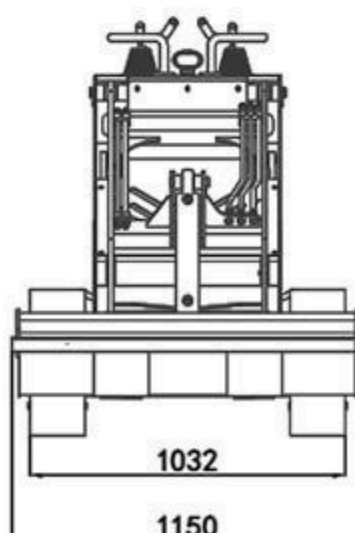


BREAKER

- Length: 0.7 m, Width: 1.0 m, Height: 0.41 m
- Weight: 130 kg



DETAILED PARAMETER CONFIGURATION

Basic performance parameter		
Machine working weight	639kg	1408.7 lb
Bucket capacity	0.15m³	5.3 ft³
Rated load mass (safe load)	102kg	224.9 lb
Maximum load mass	204kg	449.7 lb
Travel speed low/high speed	0-2.5km/h	0-1.55mph
Gradeability	25%	25%
Ground pressure	22.5kpa	3.26 psi
Maximum unloading height	1553mm	61.2 in
Maximum loading height	2259mm	89.0 in
Maximum unloading distance	620mm	24.4 in
Minimum ground clearance	129mm	5.1 in
Body		
Transport length - with bucket (mm)	2100mm	82.7 in
Transport length - without bucket (mm)	1638mm	64.5 in
Transport width (mm)	1150mm	45.3 in
Transport height (mm)	1361mm	53.6 in
Bucket width (mm)	1150mm	45.3in
Engine		
Engine brand	Briggs & Stratton	Briggs & Stratton
Engine model	XR2100	XR2100
Maximum horsepower	11.3hp	13.6ps
Maximum power	8.4kw	8.4kw
Maximum speed	3600rpm	3600rpm
Displacement	0.42L	0.11 gal
Number of cylinders	1	1
Cooling method	Air-cooled	Air-cooled
Engine oil change amount	1.2L	0.32 gal
Fuel form	Gasoline	Gasoline
Fuel grade	92#	92#
Theoretical fuel consumption	0.8-1.2L/h	0.21—0.32gal
Hydraulic system		
Main pump type/model	Gear pump PGP51044SLP	
Main pump brand	Tianjin Walking	
Multi-way valve types	Mechanical valves x3	
Multi-way valve	Tengfei	
Travel motor brand	Luke	
<div><div></div><div></div></div> <div>Unit: mm</div>		

www.rippaofficial.it

Some specifications are based on engineering measurements and may differ from actual conditions. Specifications are for comparison purposes only and are subject to change without notice. Specifications of individual RIPPA devices may vary due to normal variations in design, manufacturing, operating conditions and other factors. Some images of RIPPA devices are not limited to standard packages.

