

 WE ARE RIPPA

EXCAVATOR R82 PRO



www.rippaofficial.it

MEET THE NEW GENERATION OF RIPPA MACHINES

Lift your business to the next level with the R82PRO
RIPPA excavators. Exceptionally powerful, yet environmentally friendly,
The R82PRO excavators feature extraordinary fuel efficiency



RAISE PROFITS, PRODUCTIVITY & FUEL EFFICIENCY

TOP PERFORMANCE IN A VERSATILE PACKAGE

A compact & powerful machine for the best adaptability to any work site. Large hydraulic capacity of a tool carrier. Works in narrow spaces thanks an ultra-compact design and boom swing.

EFFICIENCY

The new R82 PRO offer really high level of efficiency, in any application, thanks to a brand new design. The R82 PRO offers the best compactness in the market, where the R82 PRO offers the best compromise between compactness and lifting performance, when heavy lifting is needed.

MANEUVERABILITY

The smooth and precise hydraulic system can drive all the attachments needed on the construction site. The operator can control the flow proportionally. Pedal driving can be operated by manual lever without using pedals. The two travel modes can be switched at any time.



EASY MAINTENANCE

Easy access from ground level to all components, filters and refilling points.

The R82 PRO was designed to be easy to keep on the job.

Offers easy access to filters, fluids and all service points — including the engine, pump package, valve bank, cooling system and plumbing.

Quick and easy machine diagnosis allows you to monitor critical systems in real time from the LCD monitor in the cab.

PRODUCTIVITY

Superior digging, pulling and traction forces to face all jobsites.

SAFETY

Anti-collision net (optional)

Powerful LED lighting with large glass door for excellent visibility

Pilot safety lock

ROPS cab

OPG protective cover (optional)

COMFORT

low noise & vibration levels and excellent all-round visibility.

Large glass door for easy access and better visibility.

Fully adjustable heated air suspension seat, air conditioning with climate control as standard.

ALL-ROUND VERSATILITY AND IMPROVED FUEL EFFICIENCY



A MODEL WITH NOVEL FEATURES

control for the hydraulic system and for the engine

- Improved ergonomics, increased comfort and excellent all-round visibility,
- Improved reliability, using high-performance materials - combined with new methods of structural stress analysis - have increased component life expectancy,
- thus reducing running costs
- Reduced maintenance increases the excavator's availability and lowers the operating costs

HIGHEST PERFORMANCE IN ANY WORK ENVIRONMENT

The advanced hydraulic system, combined with a powerful engine, provides the biggest digging and tractive forces for efficient operation. As a result, the R82PRO provides outstanding performance, work efficiency and the ability to adapt to any work environment.

Yanmar 4TNV98L (EPA4/Euro 5)

The R82 PRO has a powerful and eco-friendly heart, always providing high operating efficiency and pleasant working conditions.

BOOM SWING

The boom swing function allows you to work in very narrow areas

POWERFUL DIGGING FORCE (BUCKET)

Powerful, efficient, and with increased digging force can face every job site condition.

DOZER BLADE

Welded, unitized blade provides durability even under harsh working conditions.

DUAL-SPEED FAST AND SLOW

The fast gear is suitable for fast movement of equipment within the site, saving transition time, improving overall construction efficiency, precise control, and adapting to various working conditions



THE IDEAL WORKSPACE DESIGNED AROUND YOU

- 1 Seat
- 2 Arm rest
- 3 Left-hand work lever(joystick)
- 4 Assistive device buttons
- 5 travel pedal
- 6 Foot vent
- 7 Defrodter vent
- 8 Travel lever
- 9 Display monitor
- 10 Right-hand work lever (joystick)
- 11 Dozer lever
- 12 Cup holder
- 13 Safety lever
- 14 Starter switch
- 15 Cigarette lighter
- 16 Radio
- 17 Air conditioning panel



The cabin has been ergonomically designed with comfort in mind

The R82PRO are designed to provide you with the best possible working conditions. Its spacious interior offers a fully adjustable and comfortable seat. Comfortably seated, you have easy access to several storage compartments and a clear all-round view of the worksite. Noise and vibration levels are reduced while air conditioning allows you to maximise your productivity and return on investment.

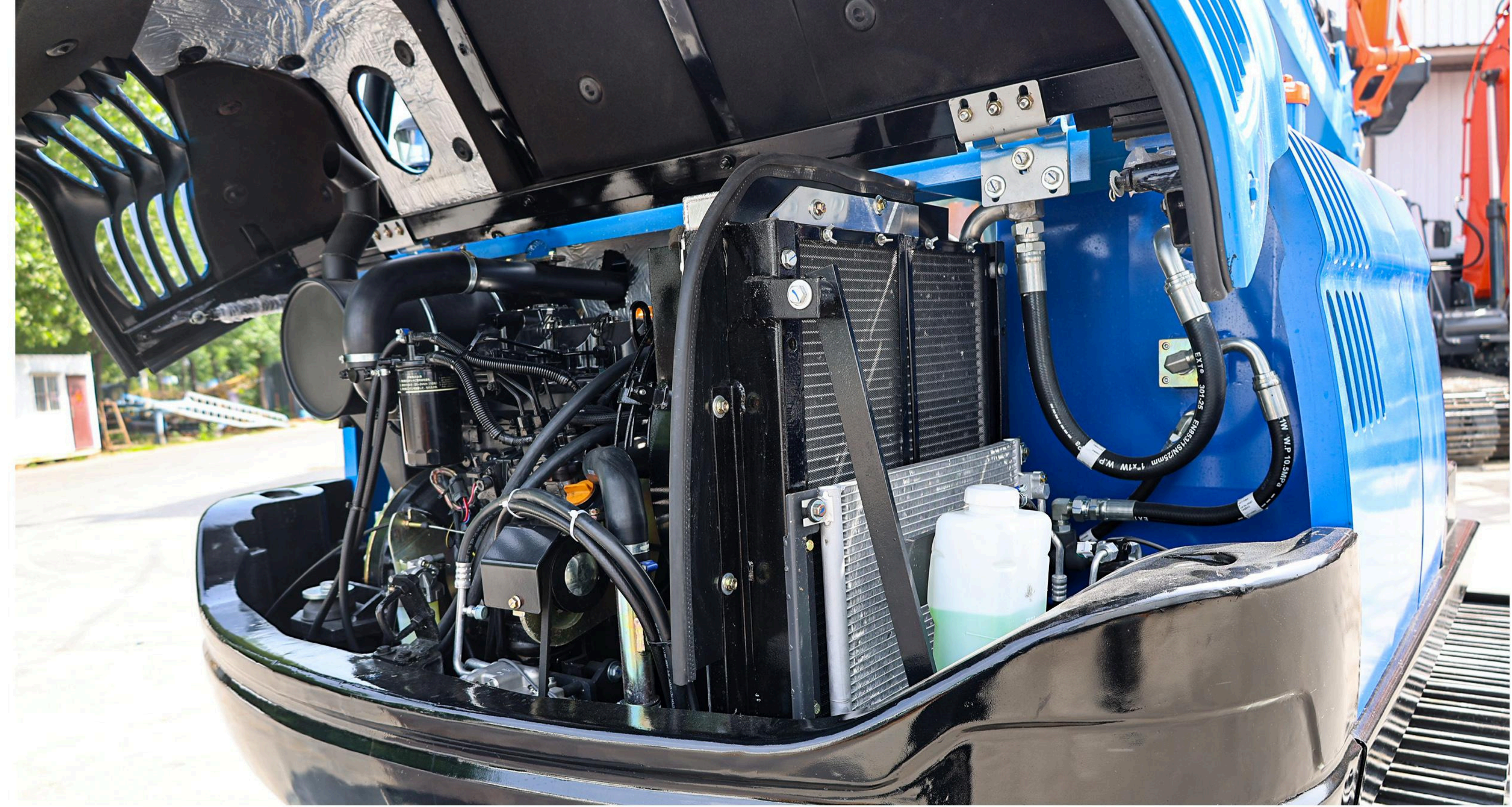
MORE DURABILITY –LESS MAINTENANCE

A reinforced chassis provides strength, while the optimised boom shape ensures uniform load distribution for more durability. Top quality materials, the most advanced computer-aided design and endurance testing under the most demanding conditions ensure your excavator will keep on performing. The R82PRO are designed for low maintenance with longer intervals resulting in more machine availability on site while skilled RIPPA-trained technicians are available to provide extra support when needed.



MORE DURABILITY — LESS MAINTENANCE

The most advanced technology developed by RIPPA.
Was integrated into the R82PRO excavators for powerful performance and simple, easy maintenance.
This provides the operator with convenient maintenance check points
and maximizes the R82PRO's work efficiency.



BEST MAINTENANCE ACCESS

MAINTENANCE ACCESS MADE SIMPLE

A battery cut-of switch makes it easy to disconnect the battery during long-term storage

The hour meter display can be easily checked from ground level -
For extra accessibility and servicing convenience, all filters

AIR BREATHER

It can effectively block dust, sand and other impurities in the air, prevent them from entering the engine cylinder, avoid wear and failure, and extend the life of the engine.

ENGINE ROOM

The engine compartment is designed for easier service, and the sturdy sound-proofing inside the engine cover reduces the noise to provide a more comfortable environment for the operator and those working around the machine.

TRACKS

The standard steel crawler has a solid structure and is suitable for heavy-duty conditions. It can support a larger machine weight and operating load, and has strong stability. The optional rubber crawler has stronger anti-skid and grip, and causes less damage to sidewalks and roads in urban environments.

OIL GAUGE

Hydraulic oil level can be easily checked through the gauge on the side of the hydraulic tank.

GREASE PIPING

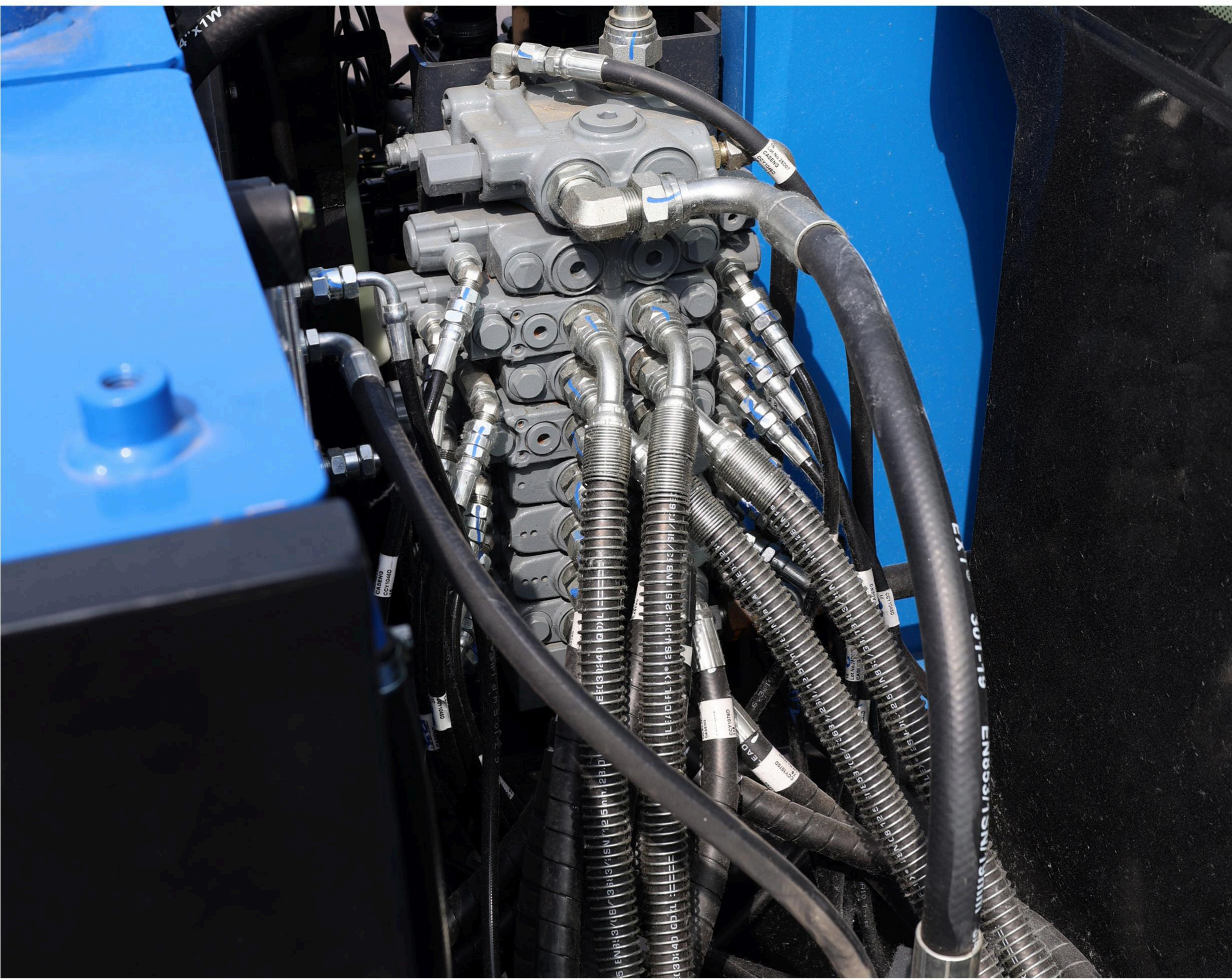
Integrated grease piping is designed for easy maintenance of the swing bearing and boom swing cylinder.

EXTERNAL FUEL CAP

The external lockable fuel tank cap makes refueling easier and safer. When the oil level reaches the minimum, a warning beep sounds for added convenience.

ENGINE HOOD HYDRAULIC SUPPORT

No need for manual support, one-button opening saves effort and time, and improves maintenance efficiency. The hydraulic rod can firmly support the engine cover to avoid accidental falling, ensure the safety of maintenance personnel, and the support angle is reasonable, with larger inspection space, making daily maintenance and repair work smoother.





ASSISTIVE DEVICES



Breaker



Scarifier



Compactor



Pile hammer



Crushing pliers



Double cylinder hydraulic shears



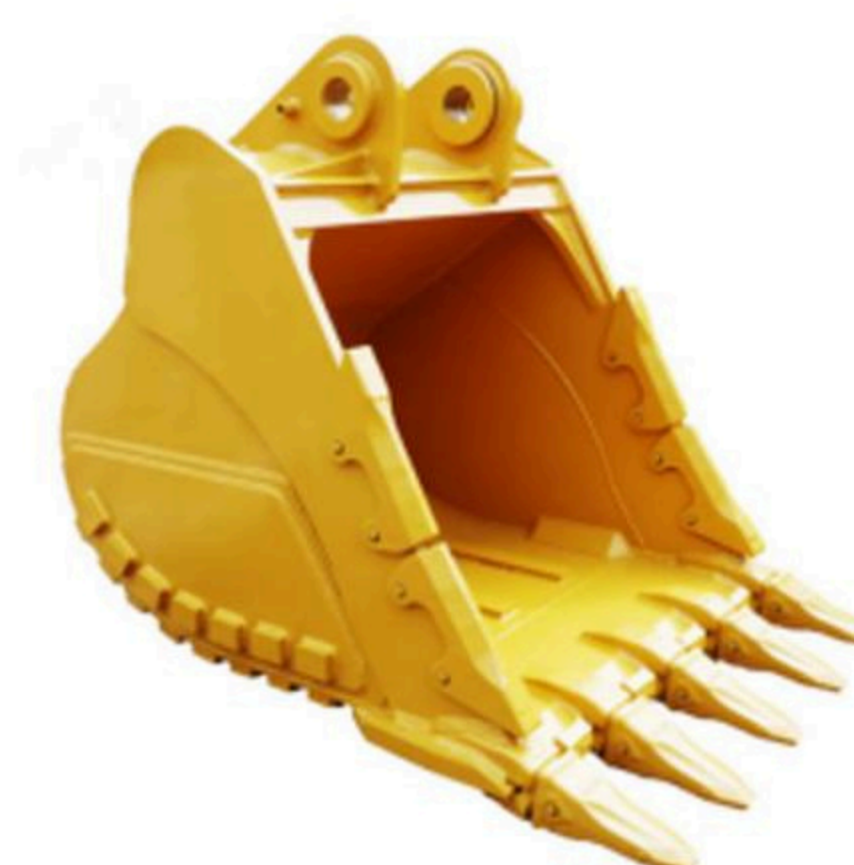
Single cylinder crushing shear



Rotating log grapple



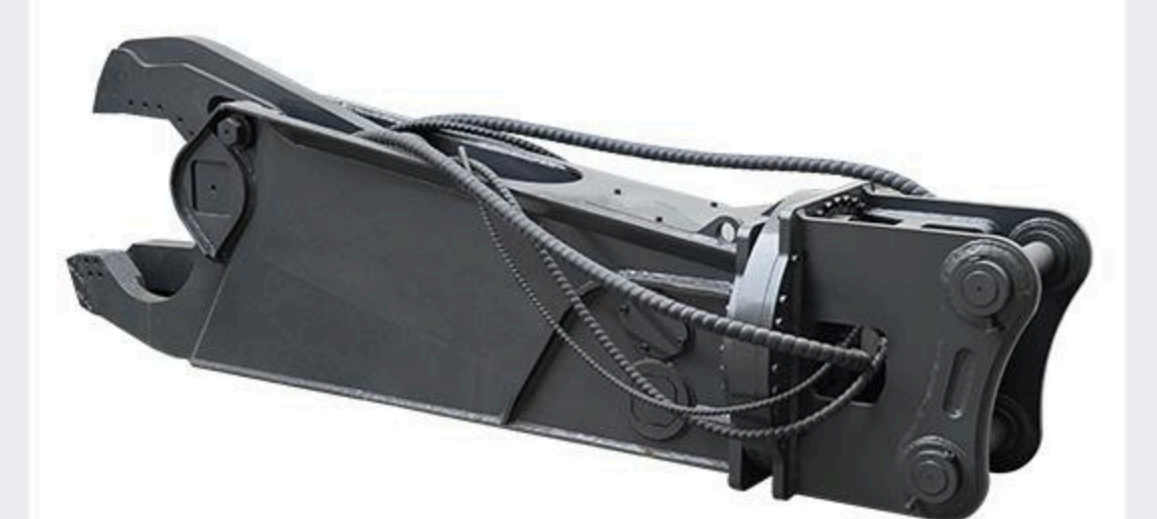
Screen bucket



Strengthen rock bucket

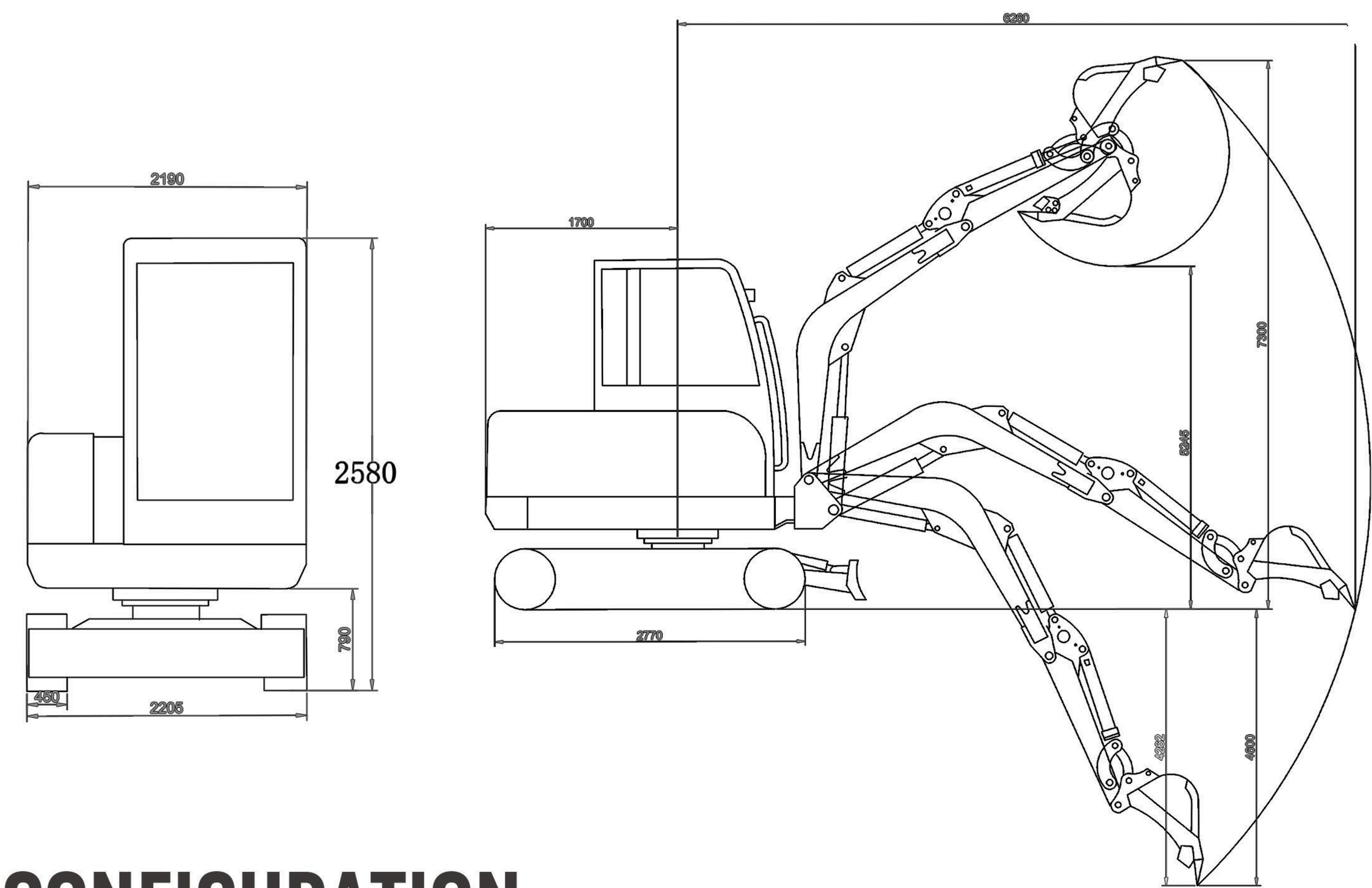


Rake



Hawkbill scissors

ENVELOPE DIAGRAM



CONFIGURATION

Optional/ Additional	Cab	Standard
	AC	Standard
	Reversing camera	Optional
	Control handle	Pilot hydraulic
	Boom swing	None
	Bulldozer swing	Optional
	Change color	Optional
	Steel track, rubber track	Optional
	Hydraulic thumb clamp	Optional
Attachments	Quick change	Optional
	Breaker	Optional
	Ripper	Optional
	Rake	Optional
	Hydraulic wood grabber	Optional
	Mower	Optional

PARAMETER

		unit		
Basic Information	Operation mode		Hydraulic	
	Multi-way valve		HYTEK	
	Hydraulic pump		HYTEK	
	Travel motor		ZHTE	
	Swing motor		ZHTE	
Machine parameters	Operating weight of the whole machine (kg)	kg / lb	8202	18044
	Bucket capacity (m³)	m³ / ft³	0.27-0.33	9.5-1.7
	Boom length (mm)	mm / lb	3722	146.5
	Arm length (mm)	mm / lb	1672	68.5
	Swing speed (rpm)	rpm	11.6	11.6
	Travel speed (km\h)	km\h / mph	2.6-4.4	1.6-2.7
	Bucket digging force (KN)	KN / lbf	57	12814
	Arm digging force (KN)	KN / lbf	39	8768
	Cab full height (mm)	mm / in		
	Tail turning radius (mm)	mm / in	1802	70.9
	Counterweight level (mm)	mm / in		
	Track full length (mm)	mm / in	2752	108.3
	Track full width (mm)	mm / in	2310	90.9
	Track shoe width (mm)	mm / in	452	17.8
	Minimum ground clearance (mm)	mm / in	367	14.4
	Maximum digging range (mm)	mm / in	6502	137.9
	Maximum digging range on the ground (mm)	mm / in	6372	250.9
	Maximum digging depth (mm)	mm / in	4172	164.3
	Maximum unloading height (mm)	mm / in	5257	207
	Maximum vertical wall depth that can be dug (mm)	mm / in	2662	104.6
	Engine model		Yanmar 4TNV98L/4TNV98C	
	Rated power (kw)	kw/ps	45	64.3
	Speed	rpm	2100	
	Cooling method		Water cooling	
Transport parameters	Total length for transportation (mm)		6146	242
	Total width for transportation (mm)	mm / in	2242	88.3
	Total height for transportation (mm)	mm / in	2662	104.8
	Number of counters per container (with dismantled arm)		1	1